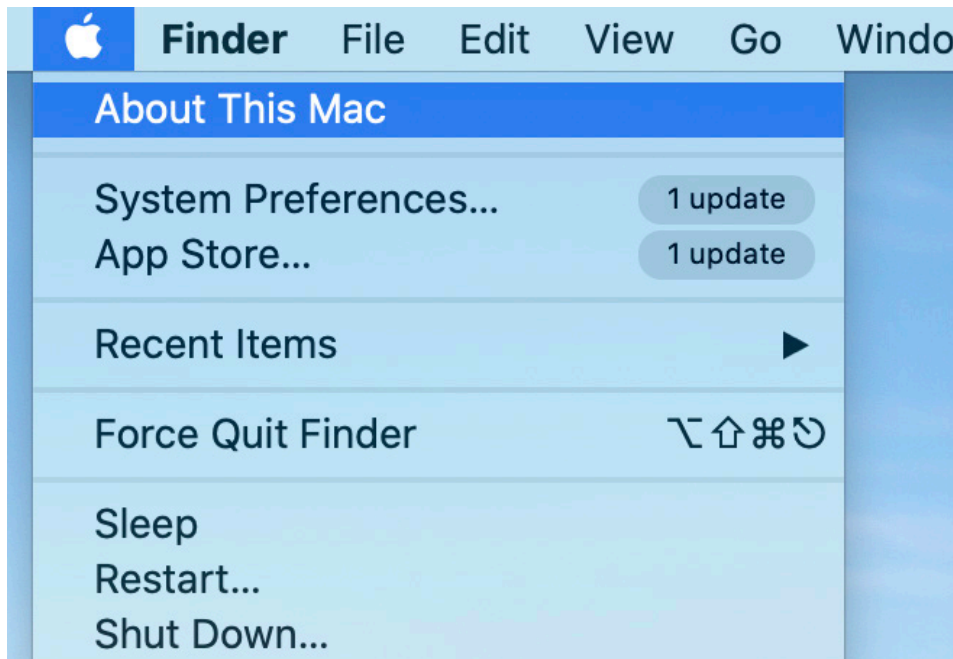


# COMPUTER SPECS

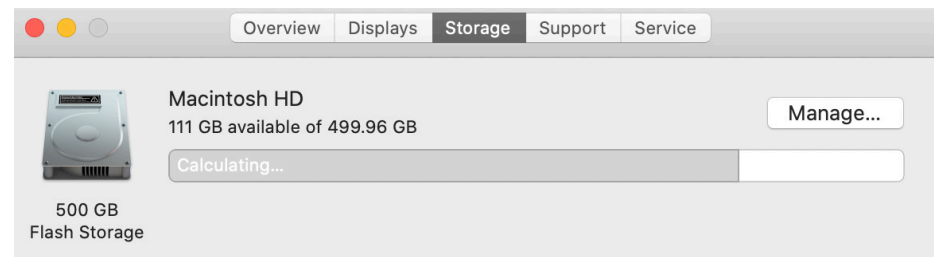
## STEP ONE



## STEP TWO



## STEP THREE



## MAC

### 1. Mac OS Version, CPU, RAM, GPU, Harddrive Space

- ▶ Apple Icon > About This Mac

### 2. Look in the "Overview" tab to find the following

- ▶ Mac OS Version is at the top of the screen ("Catalina 10.15.3" in the example below)
- ▶ CPU is under Processor
- ▶ RAM is under Memory
- ▶ GPU is under Graphics.

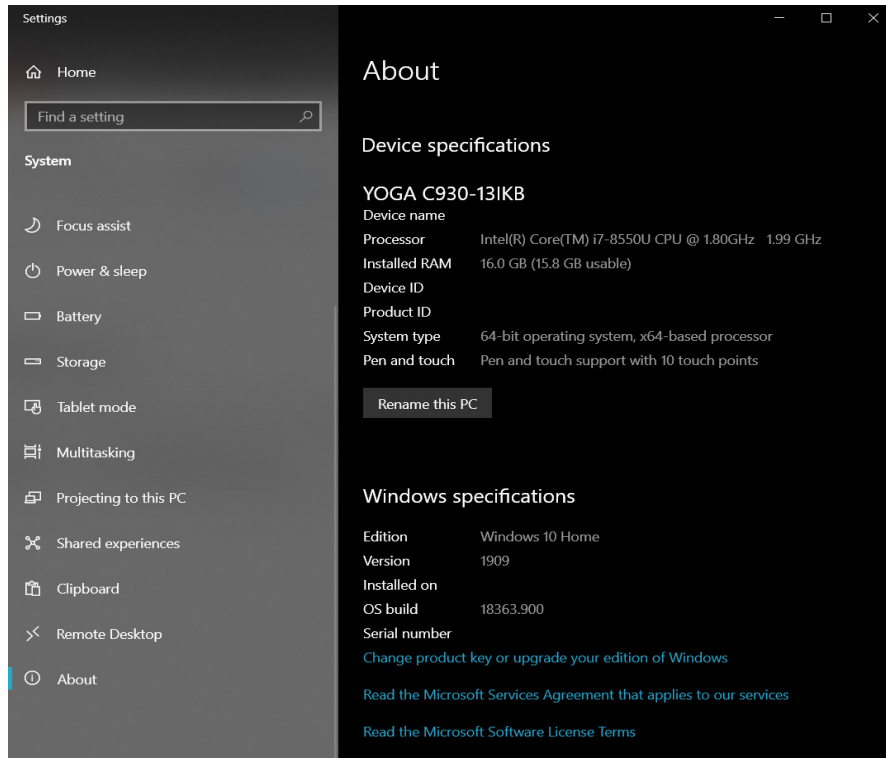
### 3. Next, look in the "Storage" tab to find the following

- ▶ Hard drive space is under Storage.

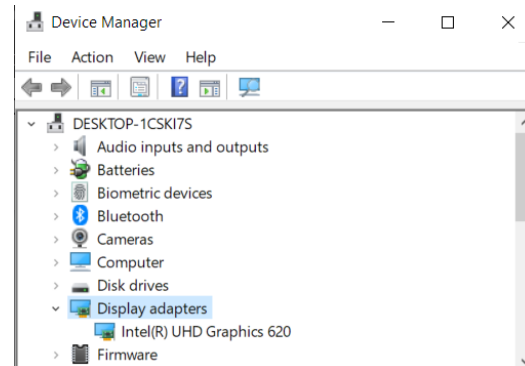
### Recommended Specs

- Memory: 8GB and above, preferably 16GB
- CPU: Intel Core i5 or i7
- GPU: 4GB
- Storage: 250GB minimum or Cloud Storage

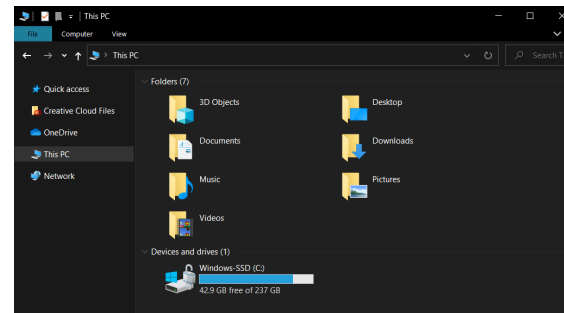
## STEP ONE



## STEP TWO



## STEP THREE



## PC

### 1. CPU, RAM, Windows OS Version

- Right-click Start Menu > System > About  
Processor (CPU) and RAM are under Device Specifications.  
Windows Edition and Version is under Windows Specifications.

### 2. GPU

- Right-click Start Menu > Device Manager > Display adapters  
GPU is under Display adapters. You will need to press the small arrow on the left to reveal it.

### 3. Hard drive space

- File Explorer > This PC in left pane > Look at your C: drive under Devices and drives. It will say something like "50 GB free of 200 GB."

### Recommended Specs

Memory: 8GB and above, preferably 16GB

CPU: Intel Core i5 or i7

GPU: 4GB

Storage: 250GB minimum or Cloud Storage